



LEXIA LESSONS[®] | STRUCTURAL ANALYSIS

Greek Combining Forms

phonology

chronology

psychologist



psychology

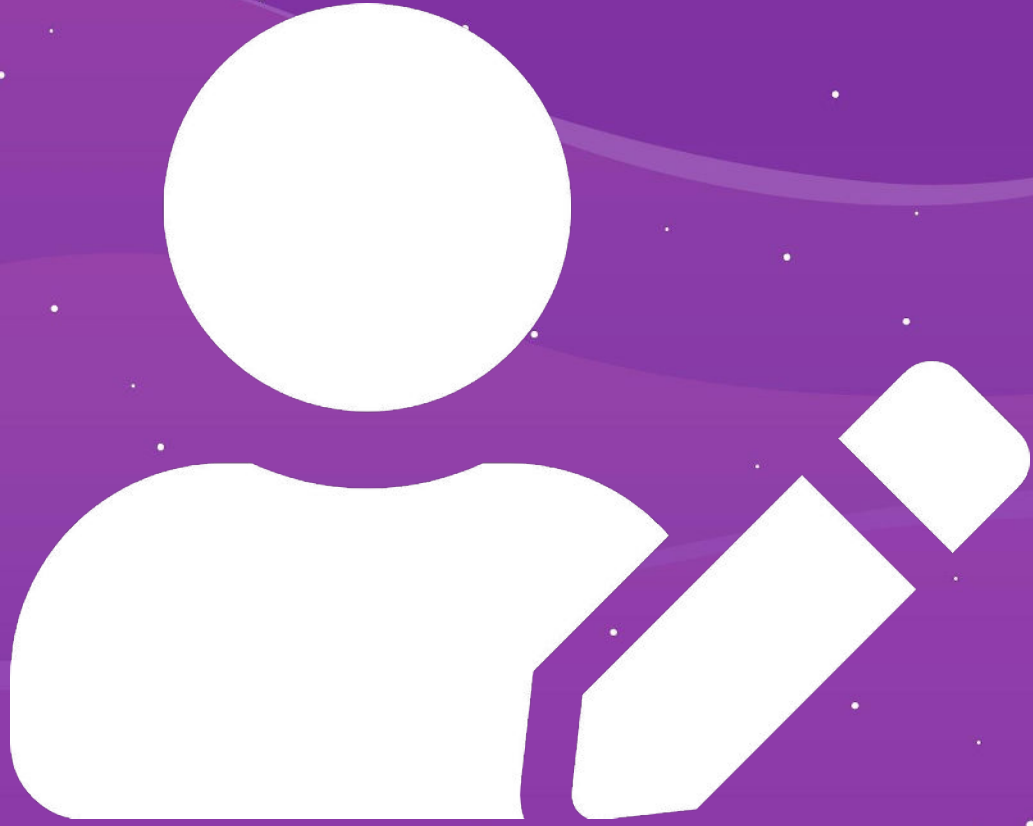
the study of the mind



pathology

the study of disease





Form	Meaning
astro	star
auto	self
bio	life
derma	skin
geo	earth
gon	angle
graph	written, recorded
mega	large
meter	measure
micro	small
naut	ship, navigate
phon	sound
pod	foot
poly	many
scope	look
tele	far, distant
therm	heat

1. ~~biol~~oggy the study of life
2. ~~astro~~naut a space navigator
3. ~~micro~~scope a tool to look at small things
4. ~~tele~~phone a tool to hear distant sounds
5. ~~derma~~tology the study of skin
6. ~~auto~~graph written or signed by oneself
7. ~~thermo~~meter a tool to measure heat
8. ~~poly~~gon having many angles
9. ~~mega~~pod having a large foot
10. ~~geo~~logy the study of the Earth

telephone

polygon

psychology

dermatology

geology

pathology

microscope

astronaut

biology

megapod

thermometer

autograph



Well
Done!



Greek Combining Forms and Meanings

Set 1

<i>Form</i>	<i>Meaning</i>
anthro	people, humans
anti	against
arch	original, ancient
astro	star
audio	sound, hearing
auto	self
biblio	book
bio	life
chron	time
crat	rule, govern
cycl	wheel, circle
deca	ten

Set 2

<i>Form</i>	<i>Meaning</i>
dem	people
derma	skin
geo	earth
gon	angle
gram	written, drawn
graph	written, recorded
hydro	water
hyper	over, above
hypo	under, below
macro	big, large
mania	enthusiasm
mega	large



Greek Combining Forms and Meanings

Set 3

<i>Form</i>	<i>Meaning</i>
meter	measure
micro	small
mono	one
morph	form, shape
naut	ship, navigate
neo	new
nym	word, name
path	suffering, disease
phil	love
phobia	fear
phon	sound
photo	light

Set 4

<i>Form</i>	<i>Meaning</i>
phys	body
pod	foot
poly	many
psych	mind
pyro	fire
scope	look
sphere	circle
stat	standing
tech	machine
tele	far, distant
theo	god
therm	heat

Greek Suffix Used with Combining Forms

Suffix

Suffix

-logy/-ology

Meaning

the study of

