



How can Lexia support Ofsted's Evaluation Areas?

Ofsted Framework 2025

LexiaUK[®]
L I T E R A C Y F O R A L L

Contents

Introduction	3
Inclusion	4
Curriculum and Teaching	6
Achievement	9
Attendance and Behaviour	11
Personal Development and Well-Being	13
Leadership and Governance	15
Conclusion	16

Introduction

The Ofsted Education Inspection Framework has evolved to place greater emphasis on how schools support every learner. It now focuses on how curriculum, teaching and personal development work together to enable all pupils to thrive. This includes a focus on:

- Inclusion
- Achievement
- Attendance and Behaviour
- Well-being
- Strong Leadership

There will be further emphasis on pupils who are disadvantaged, SEND, or face other barriers to learning.

This document highlights how Lexia aligns with these key evaluation areas, providing evidence-based literacy solutions that support early identification of needs, inclusive teaching and measurable outcomes. Lexia can help schools provide targeted literacy support, contributing to a more inclusive and ambitious learning environment while supporting Ofsted expectations.

Inclusion

This evaluation area considers how leaders and staff identify and support:

- Socioeconomically disadvantaged pupils (those eligible for the Pupil Premium).
- Pupils with SEND; this means pupils receiving special educational needs (SEN) support, and those with an education, health and care (EHC) plan.
- Pupils who are known (or previously known) to children's social care, such as children in need and looked-after children.
- Pupils who may face other barriers to their learning and/or well-being, which may include pupils who share a protected characteristic.

How does Lexia Support this evaluation?

Identifying and addressing needs and reducing barriers to learning

- **Targeted adaptive support:** Both Core5 and PowerUp are adaptive, meaning they match students' current literacy levels and automatically scaffold and reteach where needed. This approach ensures that all learners follow their own unique pathway rather than a one-size-fits-all approach.
- **Early identification of need:** Lexia's initial diagnostic assessments identify reading gaps, supporting educators in quickly addressing barriers to learning.
- **Sustained and effective intervention:** Because Lexia can be used over a sustained period and provides structured, cumulative practice, it can be part of continuous support rather than a short-term fix. This demonstrates to inspectors that support provided from Lexia is "sustained and effective".

Inclusive teaching culture

- **High-quality inclusive teaching:** Lexia supports adaptive classroom models. Rather than relying on withdrawing pupils for intervention, Lexia can be used as part of rotational classroom models, enabling more inclusive 'everyday high-quality teaching' that benefits all pupils.
- **Building teacher capacity and awareness:** myLexia's real-time data dashboards provide teachers with an increased awareness of individual learners' strengths and weaknesses. This helps build a culture where staff can quickly identify and respond to learning barriers, in line with Ofsted's expectations.
- **Student agency and belonging:** Lexia programmes are self-paced while still providing a structured learning experience so pupils can feel a sense of ownership of their learning. Certificates and pupil dashboards help build a sense of community around Lexia which ensure all pupils can be celebrated.

Parental and family engagement

- **Parental Involvement:** Schools can share Lexia usage data and progress with parents/carers, and use the program to involve them in their child's reading journey. This helps facilitate school leaders in working closely and effectively with families.
- **Transparency and shared aims:** Lexia's reporting data supports conversations between staff, leaders and families about progress, barriers and next steps.

Monitoring impact and continuous review

- **Data-driven review:** Lexia provides detailed progress data at the school, cohort and student level. Leaders can use this data to monitor the impact of support, the effectiveness of interventions and make adjustments where needed.
- **Sustained improvement and adaptation:** As Lexia feedback is in real-time, schools can continuously review and evaluate approaches as part of a responsive and evolving inclusion strategy.
- **Evidence for Inspection:** Lexia's data continuously provides insights on participation, progress and skill development. This serves as concrete evidence that inclusion strategies that are not only in place, but are already having, measurable effects.

Supporting disadvantaged and vulnerable groups

- **Closing Attainment Gaps:** For pupils from disadvantaged backgrounds, Lexia can provide structured, evidence-proven literacy support that complements broader Pupil Premium strategies. A study from the EEF found that FSM pupils made up to 2 month's additional progress with Lexia.
- **Flexible Implementation:** Lexia's computer-led design ensures that it can be delivered in a variety of settings including in-class, before/after school or even at home. This flexibility helps to support pupils who may struggle to access additional support due to barriers such as transport, attendance and illness.

Curriculum and Teaching

This evaluation area considers whether:

- Leaders design a high-quality, ambitious curriculum for all pupils (the intent), paying particular regard to disadvantaged pupils, those with SEND, those who are known (or previously known) to children's social care, and those who may face other barriers to their learning and/or well-being.
- Leaders and staff deliver the curriculum effectively (the implementation) across all subjects, year groups and key stages.
- Leaders make sure that pupils build strong foundations for accessing the curriculum and for later success, including academic achievement, good health and well-being.

How does Lexia Support this?

Curriculum design and sequencing

- **Building foundational knowledge:** Lexia's structured progression through key skills such as phonics, vocabulary, grammar and comprehension, ensures that pupils build essential literacy knowledge sequentially and cumulatively.
- **Closing knowledge gaps:** Lexia adapts to individual learners, revisiting and reinforcing prior learning and providing additional support where needed. This approach ensures content is reinforced and gaps are addressed as quickly as possible.
- **Broad Coverage:** Lexia programmes cover all essential literacy skills and can be easily integrated to support reading and writing across all curriculum subjects.

High quality teaching

- **Evidence informed pedagogy:** Lexia's curriculum design and structure is informed by the science of reading. Its pedagogy and teaching strategies are grounded in evidence and research.
- **Adaptive instruction:** Lexia meets every child where they are, regardless of age. Auto placement assessments ensure pupils begin at a starting point that suits their ability and scaffolded activities mean pupils receive personalised instruction that meets them where they are.
- **Building teachers' capacity:** Lexia's data dashboards help teachers to quickly identify skills gaps while simultaneously providing lesson plans and resources to address them. This enables teachers to focus their time where it is needed, supporting continuous improvement.
- **Sustained literacy skills practice:** The cumulative nature of Lexia's activities provides pupils with repeated opportunities to apply and consolidate learning. This aligns with Ofsted's focus on teaching that is "embedded and sustained over time".

Assessment feedback and adaptation

- **Formative assessment:** Lexia monitors progress in real time as students move through the activities, tracking skill mastery, accuracy and rate of progression. This provides real-time feedback to both teachers and pupils.
- **Using data to inform teaching:** School leaders and teaching staff can use Lexia's usage and progress data to adapt their curriculum planning (e.g., built-in extra lessons, review sessions), demonstrating responsiveness in implementation.

Developing reading, language skills and vocabulary across the curriculum

- **Broadening vocabulary:** Lexia's Vocabulary, Grammar and Morphology activities contribute to building pupils' spoken and written language, supporting wider access to disciplinary vocabulary across subjects.
- **Complete reading competency:** Lexia not only supports decoding, but comprehension; helping pupils read for meaning and comprehend text more deeply, a central component of a strong curriculum.
- **Interdisciplinary support:** Lexia can be used alongside other subject teaching to reinforce literacy across the curriculum. For example, comprehension passages span a vast range of topics and subjects, helping pupils better engage with curriculum texts.

Professional development and continuous improvement

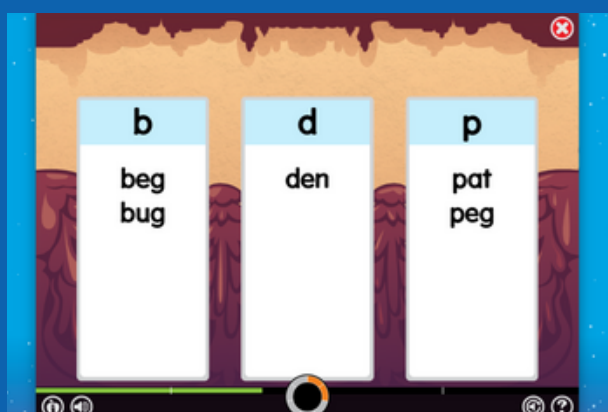
- **Teacher training:** In order to ensure Lexia is implemented effectively, LexiaUK provides initial training, ongoing coaching and mentoring. We take pride in building teacher capacity and facilitating effective implementation of the program.
- **Sharing best practice:** Lexia's data and resources empowers educators to identify gaps, adapt teaching and share strategies with each other easily. This fosters a culture of collaborative improvement.
- **Supporting curriculum review:** Through regular review of Lexia's literacy skills data, schools leaders can inform long-term curriculum planning, identifying what is working and where to make changes.

Pupil engagement, agency and independence

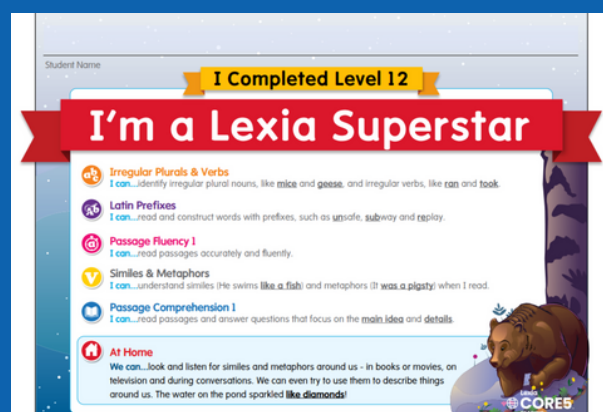
- **Self-paced learning:** Lexia supports pupils to work independently where appropriate, promoting autonomy as they learn.
- **Ownership and motivation:** Student dashboards and built-in progress celebrations help pupils to clearly see the progress they are making, increasing motivation and investment in their learning.

Equity through curriculum and teaching

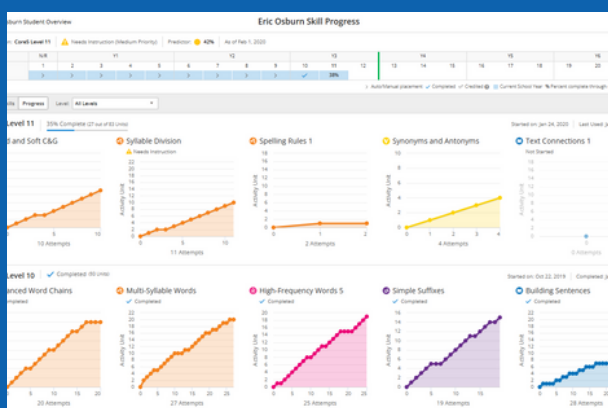
- **Ensuring all pupils access ambitious content:** Because Lexia supports pupils from a wide range of starting points, it helps schools ensure that even those who are behind have access to the full curriculum.
- **Adapting to needs:** For pupils with additional needs (e.g. dyslexia, EAL, other literacy challenges), Lexia's adaptive scaffolding means the curriculum can be made more accessible without diluting ambition.



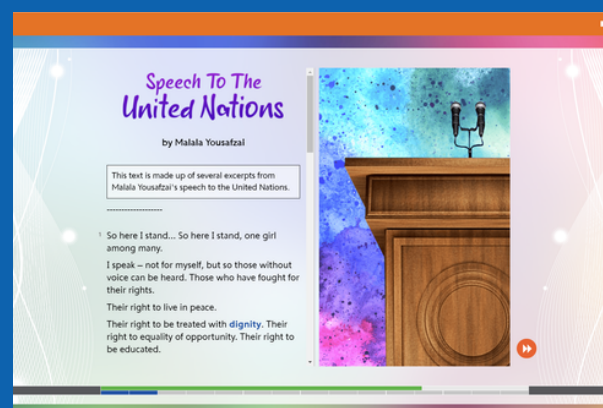
Providing tangible, visual evidence of progress to support targeted teaching.



Celebrating student success and highlighting clear progress



Staff use myLexia data to identify skill gaps and plan tailored interventions.



Blended learning offers resources and lessons to close literacy gaps.

Achievement

This evaluation area considers:

- Whether the school provides a high-quality education for all pupils (the impact), especially disadvantaged pupils, those with SEND, those who are known (or previously known) to children's social care, and those who may face other barriers to their learning and/or well-being, that gives them the necessary knowledge, skills and qualifications to succeed in life, and equips them for the next stage of their education, training or employment.
- Pupils' attainment and progress over time in national tests and examinations, where relevant.
- The progress that pupils make across the curriculum from their starting points, so that they know more, remember more and can do more.

How does Lexia Support this?

Securing foundational knowledge and early literacy skills

- **Building core literacy skills:** Both Core5 and PowerUp build pupils' foundational reading skills (phonemic awareness, phonics and decoding), actively promoting the "foundational knowledge and skills" that Ofsted recognises as part of achievement (not just exam performance).
- **Structured and cumulative activities:** Pupils must demonstrate mastery in simpler literacy skills before moving on to more complex content, ensuring that no pupil moves ahead with insecure prior knowledge.
- **Promoting curriculum access:** By strengthening early literacy, Lexia helps ensure pupils can access more of the wider curriculum, supporting an inspectors' evaluation of how well a school helps pupils acquire the basic building blocks for later learning.

Reading fluently at an age-appropriate level

- **Adaptive practice:** Continuous practice and review of skills means that students repeatedly apply decoding, automaticity and fluency skills at their level.
- **Explicit fluency instruction and support:** Through specific fluency activities and built-in support features like listen mode, pupils are provided opportunities to develop reading pace, accuracy and prosody.

Making progress and developing broad and deep knowledge

- **Diagnostic baseline testing:** Lexia begins with an initial assessment, establishing each pupil's starting point and establishes a clear adaptive pathway to mastery from their unique starting points.

- **Clear progression:** Activities are varied with clear progression to ensure pupils can acquire more knowledge (know more), access repeated practice activities (remember more) and apply their skills in multisensory contexts (do more).
- **Assessment without testing:** Using real-time, formative data, schools can demonstrate to inspectors how pupil's attainment is improving over time,. This is not just via end-of-year tests, but through sustained incremental progress.

Equipping pupils for national tests and the wider curriculum

- **Closing literacy gaps:** Lexia addresses skill gaps that directly impact performance in national tests such as phonics screening, KS1 and KS2 SATs papers and GCSE examinations.
- **Improving access to exam papers:** Lexia's vocabulary, grammar and comprehension activities build the skills required to access assessments across curriculum subjects. Explicit fluency practice also supports pupils in completing assessment tasks both quickly and accurately.

Attendance and Behaviour

This evaluation area considers:

- Whether leaders and other staff create a calm, orderly, respectful, supportive and positive environment in which pupils can thrive.
- The impact of the school's work on the attendance, behaviour and attitudes of all pupils, especially disadvantaged pupils, those with SEND, those who are known (or previously known) to children's social care, and those who may face other barriers to their learning and/or well-being, such as young carers.

How does Lexia Support this?

Creating a positive, respectful and supportive environment

- **Boosting engagement through meaningful learning:** Lexia's adaptive, gamified and scaffolded design re-engages pupils who may be reluctant learners. When students feel they are succeeding and making visible progress, their motivation and positive attitude toward school often improves.
- **Build a culture of achievement and rewards:** Lexia often includes progress tracking, certificates and in-program recognition. This helps reinforce a climate where effort is rewarded, promoting positive behaviour and a sense of belonging.

Developing routines, consistency and clear expectations

- **Structured literacy sessions:** Lexia programs provide regular, predictable sessions that can become part of daily or weekly routines. This consistency helps establish clear behavioural expectations around learning time.
- **Autonomous but guided learning:** As pupils engage independently with Lexia, they learn self-regulation (knowing when to start, how to complete tasks, when to ask for help), which can reduce disruptions and support orderly behaviour.
- **Adaptive support at the right time:** When students struggle, teachers can step in with scaffolded support informed by Lexia performance data. This ensures that behaviour issues don't arise from frustration due to tasks being appropriately pitched and support being facilitated in a timely manner.

Making progress and developing broad and deep knowledge

- **Diagnostic baseline testing:** Lexia begins with an initial assessment, establishing each pupil's starting point and establishes a clear adaptive pathway to mastery from their unique starting points.

Promoting independence, confidence and self-regulation

- **Pupil autonomy:** Lexia's self-paced structure gives pupils ownership over their learning, encouraging them to take responsibility. This nurtures independence and supports positive attitudes to learning.
- **Building confidence through success:** Schools using Lexia often report that when pupils see themselves make progress, their confidence grows. Increased confidence can reduce anxiety, disruptive behaviour and absenteeism tied to low self-esteem.
- **Self-reflection and metacognition:** Teachers and students can reflect on Lexia reports to identify strengths and areas to improve. This reflective routine helps pupils develop a growth mindset and enables them to feel in control of their learning.

Personal Development and Well-Being

This evaluation area is focused on the personal development and well-being of pupils.

This evaluation area considers:

- Whether leaders establish a suitable and coherent programme of personal development, through both the curriculum and the wider opportunities and experiences they provide for pupils.
- Whether the school supports pupils to develop the knowledge and skills they need for participation and success in later life.
- Whether the school promotes pupils' wider development, character and well-being, ensuring that they receive the care and support to achieve and thrive, in school and beyond.
- Pupils' spiritual, moral, social and cultural (SMSC) development, which can be seen across the school's activities.

How does Lexia Support this?

Providing a structured, coherent programme of personal development

- **Lexia is more than just an intervention:** It's part of a structured learning programme that builds over time, helping pupils develop perseverance, self-efficacy and a positive learning identity.
- **Regular Lexia sessions (in class or as intervention sessions) contribute to pupils' daily routines and embed a growth-mindset:** They learn that steady effort leads to real progress.

Creating a safe, nurturing learning environment

- **Independent, scaffolded Lexia tasks reduce the risk of failure:** Pupils are less likely to feel exposed or embarrassed when working at their own pace, which supports emotional safety.
- Because Lexia identifies and isolates specific literacy gaps, it allows for early intervention. This means pupils are less likely to fall behind and feel anxious about school work, which supports well-being.
- Lexia sessions can be a calm, predictable space within the school day where pupils feel supported, reducing stress and building a reliable context for personal growth.

Promoting pupils' resilience and well-being

- The adaptive nature of Lexia means pupils work at a level that is challenging but achievable, helping build resilience without overwhelming them.
- Success in Lexia builds confidence and self-esteem. When pupils see their own progress through student dashboards, certificates and completed levels, they feel capable and motivated.
- Teachers and pastoral staff can use Lexia data to identify pupils who are struggling and intervene with support, demonstrating that the school is responsive to pupils' needs.

Leadership and Governance

This evaluation area considers:

- Whether leaders and those responsible for governance collectively ensure that the school's provision enables every pupil to thrive.
- The commitment of leaders and those responsible for governance to raising standards of education and care to improve the lives of all pupils, especially those who are disadvantaged, those with SEND, those who are known (or previously known) to children's social care, and those who may face other barriers to their learning and/or well-being.

How does Lexia Support this?

Supporting manageable teacher workloads and systems

- **Reducing the need for additional planning:** Lexia supports teachers' workloads by automatically delivering personalised intervention without teachers needing to plan these.
- **Diagnostic assessment:** Lexia generates instant assessment data, reducing the need for additional marking and testing. myLexia data enables teachers to quickly determine which pupils need additional support and provides bespoke lesson plans and resources.
- **Freeing up teacher time:** Using Lexia means that teachers don't need to plan, mark or reassess intervention tasks, freeing up time for high-impact teaching.

Providing leaders and governors with meaningful data

- **Evidence of impact:** Lexia dashboards and summary reports provide governors with clear, easy-to-interpret evidence of intervention impact, cohort progress and resource effectiveness.
- **Informing CPD opportunities:** Lexia identifies common skill gaps across year groups or cohorts, enabling leaders to direct CPD (e.g., phonics, vocabulary, comprehension) based on real need.

Conclusion

'Lexia supports schools in creating inclusive, evidence-informed and high-impact literacy provision across all key inspection areas, from curriculum design and teaching quality to pupil achievement, well-being, and leadership. Its adaptive, structured, and data-driven approach empowers teachers, engages pupils, and provides clear evidence of progress that aligns with the priorities of the new Ofsted framework.'

Discover how Lexia can help your school strengthen literacy provision and support every learner. Sign up for a **30-day free trial** today and experience first-hand the difference Lexia can make in improving reading outcomes and fostering literacy confidence for all pupils.